

# BROMAKIL

Trusted by a country mile



**Smart Bait for Rodents**

**DE SANGOSSE AUSTRALIA Pty Ltd**  
38 Ricketty St, Mascot NSW 2020

Phone: 02 9078 7859 Fax: 02 8569 2098 [infoAU@desangosse.com](mailto:infoAU@desangosse.com)

**DE SANGOSSE** 

Product Code & [units/shipper]

Grain 500g : 200287 [10/shp]

Grain 2kg : 200283 [8/shp]

Grain 4kg : 200295 [3/shp]

Grain 15kg : 200282 [1/shp]

# BROMAKIL

## Grain Bait for Rats & Mice

### KEY FEATURES:



A Bromadiolone based rodenticide made of highly palatable cracked grain for rats & mice. Used around grain storage facilities, sheds etc.



Sizes available: 500g, 2kg, 4kg & 15kg



Product Code & [units/shipper]

Block 140g : 220535 [20/shp]

Block 500g : 200291 [6/shp]

Block 2kg : 200292 [4/shp]

Block 5kg : 200293 [1/shp]

Block 10kg : 200294 [1/shp]

# BROMAKIL

## Block Bait for Rats & Mice

### KEY FEATURES:



A Bromadiolone based block to control rats and mice. Formulated for use in damp and external areas. Ideal in winter. This bait can be secured by nailing through the center hole of the block.



140g blister pack comes with 4 blocks each 35g.



Sizes available: 140g, 500g, 2kg, 5kg & 10kg



*Product Code & [units/shipper]*  
*Drink 500mL : 200284 [10/shp]*  
*Drink 5L : 200286 [2/shp]*

# BROMAKIL

## Super Rat Drink

### KEY FEATURES:

- ✓ A concentrated liquid bait containing 0.05% Bromadiolone.
- ✓ Ideal in dry environment and where rodents rejected other baits.
- ✓ Mix 1:10 with water before using.
- ✓ Bromakil Super Rat Drink is a very effective way of eradicating rats in the summer months and is exclusive to De Sangosse.
- ✓ Sizes available: 500ml & 5L.



*Product Code & [units/shipper]*  
*Pellet 3.4kg : 200296 [3/shp]*  
*Pellet 10kg : 200288 [1/shp]*

# BROMAKIL

## Pellet Bait for Rats & Mice

### KEY FEATURES:

- ✓ A Bromadiolone single feed highly palatable pelletised bait which can be used as an alternative to grain bait for rats & mice.
- ✓ Use under floor spaces and in dry areas.
- ✓ Ideal when burrows are found.  
Place directly into burrows.  
Do not cave in.
- ✓ Sizes available: 3.4kg & 10kg.





**THINK SOFT.  
STRIKE HARD!**

## KEY FEATURES:

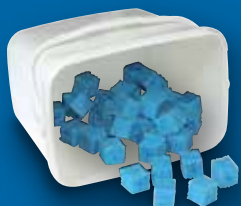
- ✓ Based on **DIFETHIALONE**, a new active in Australian Agricultural Market, combined with the most attractive formulation
- ✓ 10g ready-to-use **SOFT BAIT**
  - More attractive than competing food sources.
  - Do not melt in hot condition
- ✓ Single-feed with rapid mode of action.
  - 2-3g to kill a rat (average daily diet = 20g/day)
  - 0.3-0.4g to kill a mouse (average daily diet = 3g/day)
  - Can be as quick as a couple of days

**Product Code & [units/shipper]**  
**GENBLUE-SB-480** [20/shp]  
**GENBLUE-SB-1500** [4/shp]  
**GENBLUE-SB-5500** [1/shp]

Sizes available: 480g, 1.5kg & 5.5kg



Soft Baits contain Bitrex, a bittering agent that reduces the risk of consumption by non-target. Vit K1 is an effective antidote in case of non-target poisoning



**SMALL DOSE  
BIG RESULTS!**

## KEY FEATURES:

- ✓ Latest generation active ingredient **DIFETHIALONE**, 25ppm
- ✓ Small 15g block gives 25% more bait placements than 20g competitor products
- ✓ A rapid knock-down of large infestations
- ✓ Sizes available: 1.2kg & 7.5kg

**Product Code & [units/shipper]**  
**GENBLUE-BL-1200** [4/shp]  
**GENBLUE-BL-7500** [1/shp]



Blocks contain Bitrex, a bittering agent that reduces the risk of consumption by non-target. Vit K1 is an effective antidote in case of non-target poisoning





## KEY FEATURES:

- ✓ Contains single-feed **BROMADIOLONE**, 50ppm  
20g extruded block. Use less than other bromadiolone baits
- ✓ Highly mould-resistant, yet extremely effective
- ✓ Ideally for locations with high ambient humidity
- ✓ Rotate with Generation Blue to manage resistance development
- ✓ Sizes available: 3.5kg & 7.5kg

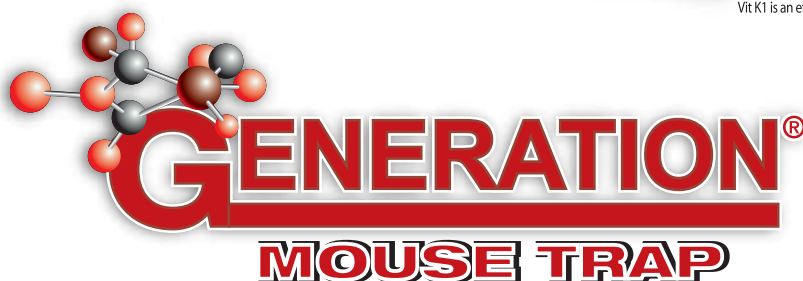


Blocks contain Bitrex, a bittering agent that reduces the risk of consumption by non-target. Vit K1 is an effective antidote in case of non-target poisoning.

**Product Code & [units/shipper]**

**GENGREEN-BL-3500 [1/shp]**

**GENGREEN-BL-7500 [1/shp]**



## KEY FEATURES:

- ✓ **Quick set:** Arm the trap by lifting metal bar
- ✓ **Versatile and easy to use:**
  - Slightly opaque tunnel allows keeping catch concealed
  - Dispose of catch swiftly and **no touch** with dead mouse
  - Can be used again and again
- ✓ **Safe:**
  - Place lure from under the trap with no risk of setting off
  - Finger protection device allows for safe handling, minimizing risks for children, pets and non-targets.



POSITION bait or lure before arming



ARM the trap



SET the trap in chosen area



CATCH: Metal bar triggered by mouse



RELEASE: bar and shake to dispose of mouse

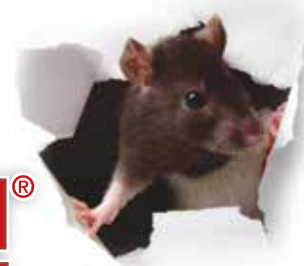
**Product Code & [units/shipper]**

**GEN-MOU-TRAP [20/shp]**



# GENERATION®

## BAIT STATIONS RANGE



### BAIT STATION - RAT & MOUSE is Fast & Flexible



- Quick & easy key entry system
- Compatible with a wide range of baits and attachments
- Compact yet sturdy station
- Opens away from wall providing convenient surface or data recording
- Horizontal or vertical mounting for versatility
- Straight-through entry/exit design promotes maximum feeding



*Pack Sizes GENERATION RAT  
Carton of 6*

### BAIT STATION - TUNNEL is an economical solution for Rats and Mice.



- Fast to service
- Straight-through entry/exit design promotes maximum feeding
- Ideal for Rats and Mice - Use the Rat & Mouse bait station if higher capacity is required



*Pack Sizes GENERATION TUNNEL  
Carton of 24*

### BAIT STATION - MOUSE is Built For Speed



- Fast to service; use same key as Rat and other Generation bait stations
- Straight-through entry/exit design promotes maximum feeding
- Provides double the bait capacity, compared to the competition
- Vertical or horizontal mounting for versatility



*Pack Size GENERATION MOUSE STATION - Carton of 20*

#### Product Code & [units/shipper]

GEN-RAT-ST [6/shp]

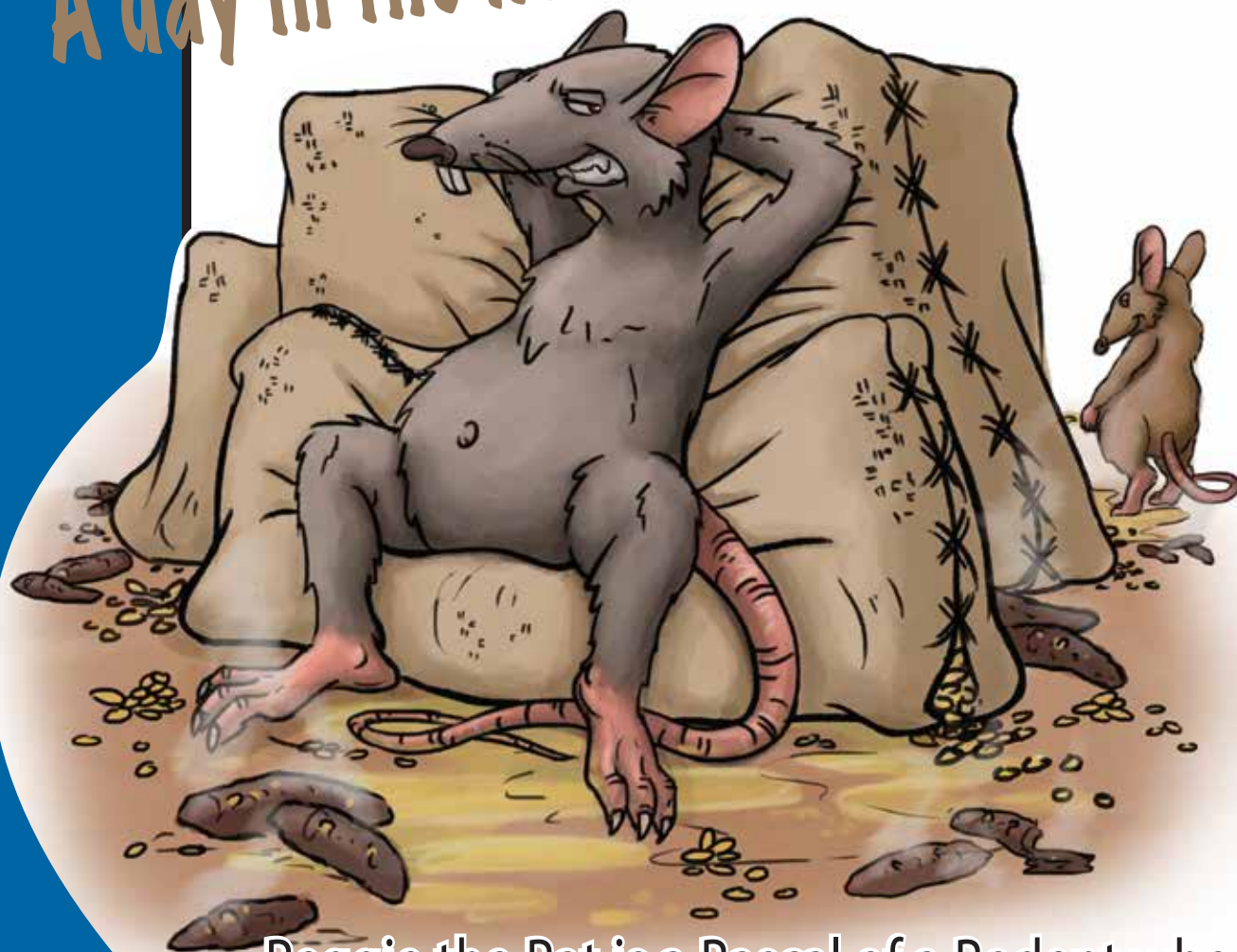
GEN-TUN-ST [24/shp]

GEN-MOU-ST [20/shp]



SMART BAIT FOR RODENTS

# A day in the life of Reggie the Rat.



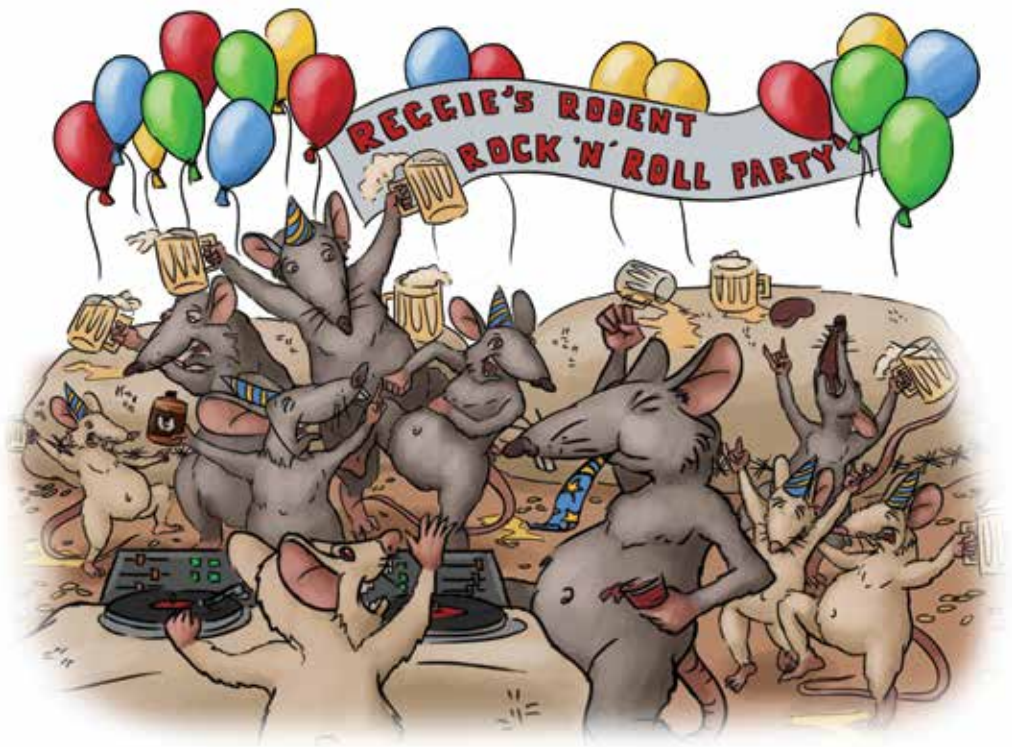
Reggie the Rat is a Rascal of a Rodent who loves to Rumble, Reproduce and Rock & Roll.

Rats and mice are the most serious mammalian pests ever known; their opportunist lifestyle, intelligence, agility, omnivorous diet and prolific breeding potential are a constant threat to Australian farmers and householders. Rats and mice must be controlled as they cause serious damage to property, crops and are a significant health risk.



## Reggie's Rodent Rave and Rock & Roll party

Rats are very social and typically live in communities of 8 to 15. They feed and socialise almost exclusively at night.



## Reggie Romances and Reproduces

Rats have an incredible reproduction rate. If two rats are allowed to mate in a suitable environment for 18 months they can potentially have over a million descendents.

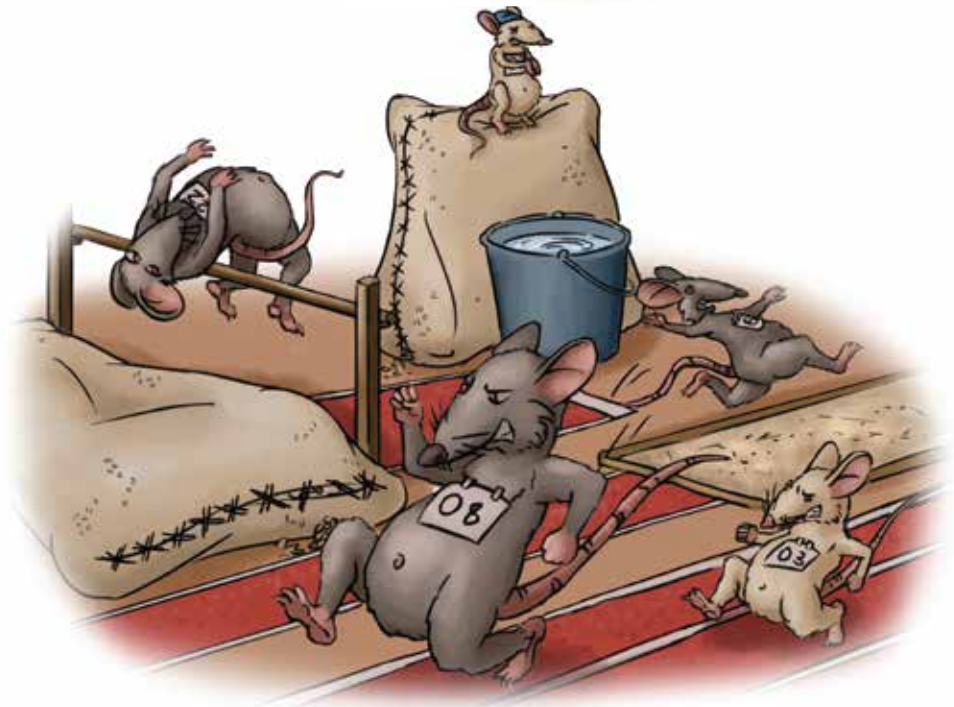
Rats reach sexual maturity at 8 to 12 weeks of age and mate all year round.

Rats have large litters (6 to 10) and can have up to 7 litters a year.



## Reggie Races and Romps at the Rodent Olympics

Physically very strong, rats have been known to swim for two days in open water. They can high jump a metre, long jump 1.2 metres, aerobically drop 15 metres and hit the same top speeds as a human sprinter of around 40km per hour.





## Reggie can't Resist

Rats and mice have an excellent sense of taste and a good memory. Rodents can identify certain substances, including some rat poisons. Rodents are very cautious, initially taking a small taste of anything new. After a taste of Generation they can't get enough. (note graphs below of attraction trials).



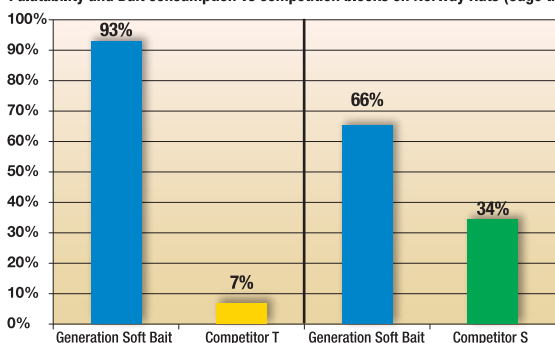
### RAT and MOUSE Palatability and Attraction Studies

Bait 'shyness' and more attractive food sources are real issues for rodenticides.

In controlled studies against two Australian competitor baits

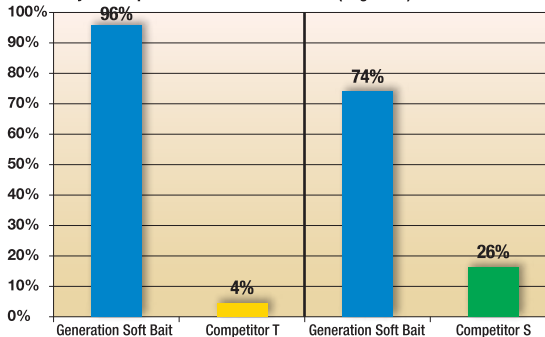
Generation soft baits were much more palatable and attractive to both rats and mice

Palatability and Bait consumption vs competition blocks on Norway Rats (Cage trial)



**Protocol:** Day 1: individuals placed in cage with cereals. Day 7: measure individuals' weight + replace cereals with 50 g of baits. Bait A placed left - Bait B placed right  
Day 8 to 11: measure baits consumption each day. - Switch bait places every day - Weigh remaining baits and replace up to 50g. Day 11: complete trial

Palatability vs competitor blocks on House Mice (Cage trial)



**Protocol:** Day 1: individuals placed in cage with cereals. Day 7: measure individuals' weight + replace cereals with 50 g of baits. Bait A placed left - Bait B placed right  
Day 8 to 11: measure baits consumption - Switch baits places every day - Weigh remaining baits and replace up to 50g. Day 11: complete trial

**GENERATION OUT-PERFORMS THE LEADING BAITS WHEN RATS ARE GIVEN A CHOICE OF BAITS TO FEED ON.**

- ✓ GREATER BAIT ACCEPTANCE
- ✓ A LETHAL DOSE FROM A SINGLE VISIT

## Reggie Rapidly Rolls Over

After a single feed Reggie is history. But not before he has told all his mates of the great tasting bait and the whole colony will gradually have joined in the feast.



# DE SANGOSSE



*DE SANGOSSE AUSTRALIA Pty Ltd  
38 Ricketty St, Mascot NSW 2020*

*infoAU@desangosse.com  
Phone: 02 9078 7859  
Fax: 02 8569 2098*