

GENERATION®

BLUE BLOCKS



SMALL DOSE BIG RESULTS

KEY FEATURES:

- ✓ Latest generation new active ingredient - difethialone
- ✓ Small 15g block gives 25% more bait placements than 20g competitor products
- ✓ A rapid knock-down of large infestations
- ✓ Ideally suited to control rats and mice
- ✓ Highly palatable block formulation for maximum bait uptake
- Blue dye aids in the identification of bait consumption in rodent excrement
- Blocks have a central hole for ease of securing inside bait stations
- Blocks contains Bitrex, a bittering agent that reduces the risk of consumption by non targets
- VitK1 is an effective antidote in case of non-target poisoning

Key Benefits

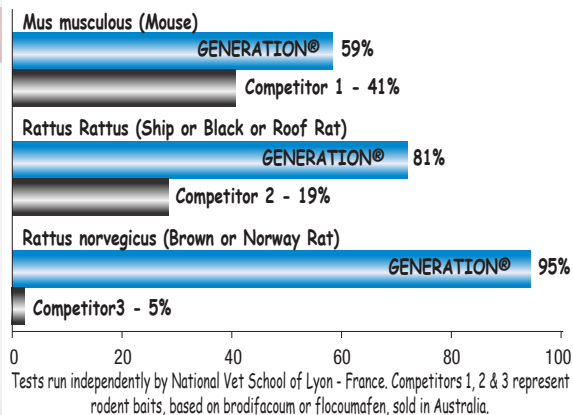
- Performs very well when there are competing food sources
- Quick and effective control means repeat customers
- Unparalleled bait consumption - Outperforms competition baits in head-to-head trials.
- Superior palatability. Rats and mice cannot resist.
- Only a small dose gives a kill
- Low cost per placement
- Moisture resistant and stands up to high temperatures

Bait Stations for responsible rodenticide use.
Available in 3 sizes:

TUNNEL / MOUSE / RAT and MOUSE



Comparative palatability of GENERATION® Blue Block against other baits (% consumption)



Ship rat (*Rattus rattus*) is the most common rat species in Australia

Pack Sizes: Block 1.2kg and 7.5kg