

**PROTECTION OF**  
**DAIRY/CATTLE FARMS**  
against rodent infestation



Your local reseller

Guide developed by the Technical Service and Development of  
De Sangosse Australia

Copyright 2020 DE SANGOSSE AUSTRALIA. Any partial or complete  
reproduction, imitation is forbidden without a prior approval of  
De Sangosse Australia.

# THE PESTS

Rats and mice have specific characteristics. By identifying the correct species of rodents present on site, you can select the right rodent control products and the best strategy to insure maximum efficacy of the treatment.

## ROOF RAT (Black rat / Ship rat)



### KEY FEATURES

**Body** : 15-20cm • **Tail** : longer than the head + body length (different from Norway rat) • **Ears** round and big

### INFESTATION INDICATORS

**Droppings** shaped like « water drops » cylindrical, 1cm long, very dry, black • **Footprints** and tail prints on dust • **Damages** : electrical wires, stored food and gnaw marks.



### BEHAVIOUR

Nest **high up** inside buildings, in roof tops, attics, grain storage areas • Does not burrow but build **nests**. **Highly wary and neophobic** • **Food diet**: Fruits, nuts, grain, meat  
Requires small amount of water

### KEY FEATURES

**Body** : 20-25cm • **Tail** : shorter than the head + body length (different from Roof rat) • **Ears** small

### INFESTATION INDICATORS

**Droppings** shaped like « olive pits », 1.5cm long. Smell of **urine** • Bare tracks in vegetation and burrows • **Damages** : crop damages, electrical wires, gnaw marks, eats and contaminates foodstuffs.



### BEHAVIOUR

Lives in humid and dark areas, **water banks**, sewers. **Burrows in embankments and fields** • **Food diet**: Cereals & grain, meat  
Requires constant supply of water. • Hoards foodstuffs

### KEY FEATURES

**Body** : 6-10cm • **Tail** : longer than the head + body length  
**Ears** : big, pointy

### INFESTATION INDICATORS

- **Droppings** shaped like « rice grain », 0.5cm long. Scattered, brown in colour.
- **Urine** very distinctive smell
- **Damages** : crop damages, electrical wires, insulation, eat and contaminates foodstuffs.



### BEHAVIOUR

Lives in farms, houses and grain storage. In crops, with conducive conditions population can explode rapidly. **Builds nest and lives in colony**. Can also dig burrows (especially in crops) • **Curious, not wary**  
**Food diet**: Omnivorous, chews on all materials and removes husks from grains.

## NORWAY RAT Brown rat / Sewer rat)



## MICE



# RECOMMENDED PRODUCTS

**ROOF RAT**  
(Black Rat)

**NORWAY RAT**  
(Brown rat)

**MICE**

**PRODUCTS KEY BENEFITS**

## IN AND AROUND BUILDINGS



### GENERATION BLUE® SOFT BAIT

5kg - Product code: GENBLUE-SB-5500  
1.5kg - Product code: GENBLUE-SB-1500  
480g - Product code: GENBLUE-SB-480

Difethialone - 25mg/kg



Using food grade ingredients and vegetable oil. Sachet allows aroma to escape  
**Highest attractiveness and palatability**  
**QUICK KNOCK DOWN with small dose**  
No genetic resistance globally



### GENERATION BLUE® BLOCKS

7.5kg - Product code: GENBLUE-BL-7500  
1.2kg - Product code: GENBLUE-BL-1200

Difethialone - 25mg/kg



**Extented protection**  
**Strong attractiveness**  
**Ideal for damp environment**  
Best efficacy on Roof rats  
Central hole for easy securing.



### BROMAKIL GRAIN

15kg - Product code: 200282  
4kg - Product code: 200295  
2kg - Product code: 200285  
500g - Product code: 200287

Bromadiolone - 50mg/kg



Highly palatable cracked grain  
Does not germinate  
**Ideal in environment with high food competition like grain storage facilities sheds, farm, etc.**



### BROMAKIL PELLET

3.4kg - Product code: 200296  
10kg - Product code: 200288

Bromadiolone - 50mg/kg



Single feed pelletised bait. Can be used in burrows.  
**Great efficacy on Norway rats**  
**Ideal under floor spaces and in dry areas**

## IN AND AROUND BUILDINGS - DRY CONDITIONS



### BROMAKIL SUPER RAT DRINK

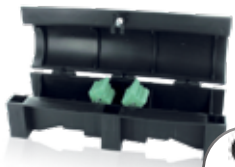
500mL - Product code: 200284  
5L - Product code: 200286

Bromadiolone - 50mg/kg



**Concentrated liquid bait**  
Very effective during summer months  
**Ideal in dry environment and where rats rejected other baits**

## SECURING BAITS



### GENERATION TUNNEL STATION

Product code: GEN-TUN-ST



**Quick opening and closing system**



### GENERATION RAT STATION

Product code: GEN-RAT-ST



**PROTECTION**  
Safe for users and non-target species



### GENERATION® MOUSE STATION

Product code: GEN-MOU-ST



**PROTECTION**  
Bait is effectively protected from harsh weather conditions, dust and temperature variations...

**STURDINESS**  
Stations are durable, cleanable and re-usable

Always read label before use.

DE SAN GOSSE AUSTRALIA Pty Ltd  
17/45 Huntley St, Alexandria, NSW2015  
Tel: 02 9519 6360- Email: infoau@desangosse.com

DE SANGOSSE





# Recommendations

## The right product

Bait station locations are for guidance

# for heavy infestations

## in the right place !

(always read the label and product information before use)

### LEGEND

#### RODENTS ACTIVITY INDICATOR

low  
average  
high

#### OUR PRODUCTS

- GENERATION BLUE SOFT BAITS
- GENERATION BLUE BLOCKS
- BROMAKIL GRAINS
- BROMAKIL PELLETS
- BROMAKIL DRINK

#### RATES

##### Mice

- 3 to 5 sachets (10g) per bait station
- 25 to 50g of grain per bait station

##### Rats

- 10 to 20 sachets (10g) per bait station
- 100 to 200g of grain per bait station
- 10-15 blocks (15g) per bait station

#### BAIT STATIONS

##### TAMPER RESISTANT BAIT STATIONS

In case of high infestations

Mouse bait stations

Every 1 to 1.5 m

Rat bait stations

Every 4 to 5 m

ELECTRICAL CUPBOARD

CATTLE PATHWAY

#### STALL CALVES/HEIFERS

Exterior	Norway rat	High	Blue blocks, Green pellets, Blue soft baits
Interior	Mice	High	Blue soft baits

Only treat during when stalls are empty in between 2 lots of cattle

#### MACHINE ROOM

Interior	Roof rat	High	Blue blocks, Blue soft baits, BROMAKIL DRINK
Interior	Norway rat	High	Blue blocks, Green pellets, Blue soft baits
Interior	Mice	High	Blue soft baits

Place soft baits sachets in electrical cupboard. Close and lock.

#### STORAGE FACILITY (STRAW - HAY)

Exterior	Roof rat	High	Blue blocks, Green pellets, Blue soft baits
Exterior	Norway rat	High	Blue blocks, Green pellets, Blue soft baits
Exterior	Mice	High	Blue soft baits

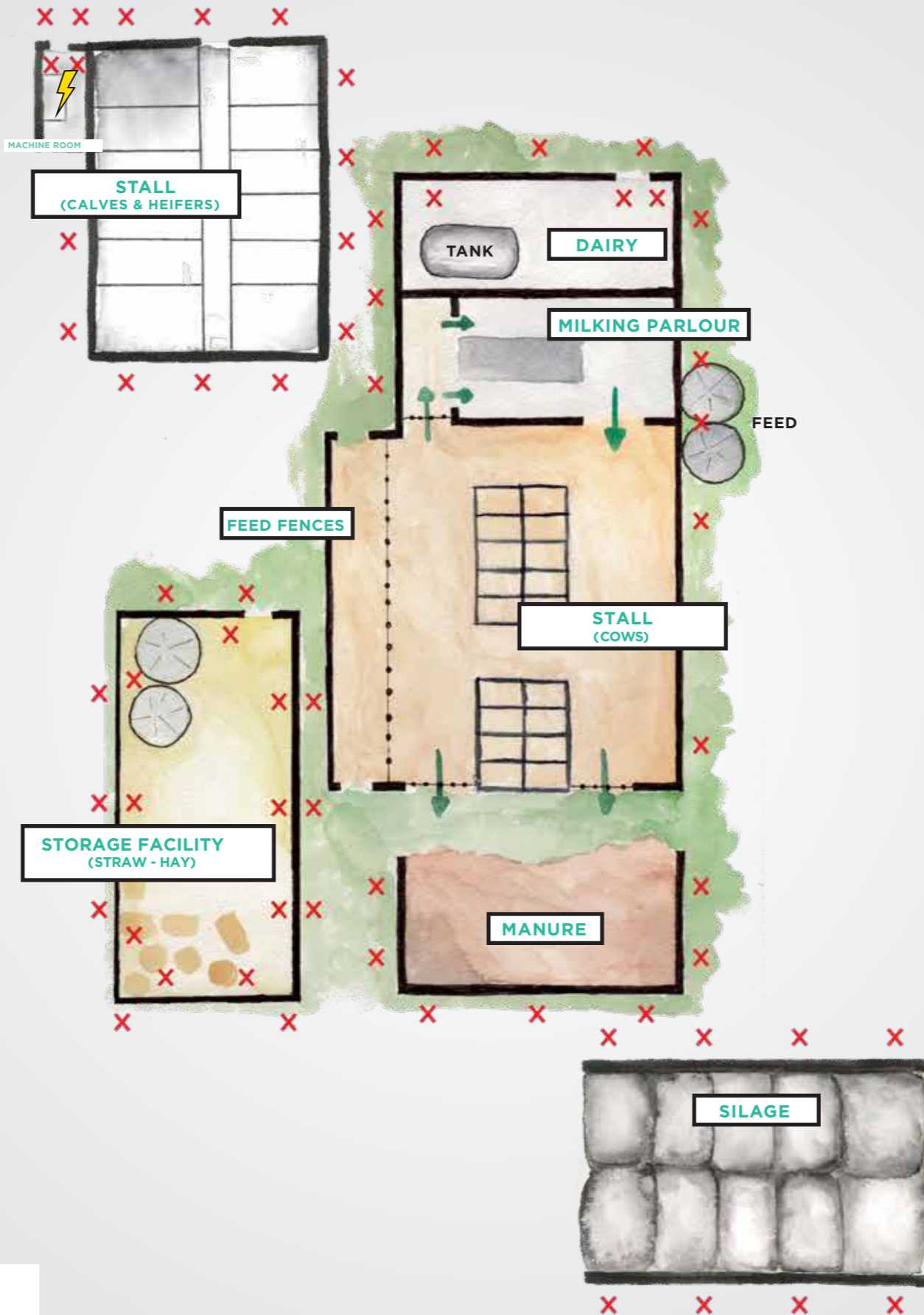
Interior	Roof rat	High	Blue blocks, Green pellets, Blue soft baits
Interior	Norway rat	High	Blue blocks, Green pellets, Blue soft baits
Interior	Mice	High	Blue soft baits

#### SILAGE

Exterior	Norway rat	High	Blue blocks, Green pellets
Exterior	Mice	High	Blue soft baits, Green pellets

#### EXPERTS ADVICE

- Place baits up high for Black Rats as close as possible of activity indicators
- Secured baits inside bait stations on rods for better efficacy



#### DAIRY

Exterior	Norway rat	High	Blue blocks, Green pellets, Blue soft baits
Exterior	Mice	High	Blue soft baits
Interior	Roof rat	High	Blue blocks, Green pellets, Blue soft baits
Interior	Norway rat	High	Blue blocks, Green pellets, Blue soft baits
Interior	Mice	High	Blue soft baits

#### MILKING PARLOUR

Exterior	Norway rat	High	Blue blocks, Green pellets, Blue soft baits
Exterior	Mice	High	Blue soft baits

NO TREATMENT in the milking parlour

#### COW STALL & FEED FENCES

Exterior	Norway rat	High	Blue blocks, Green pellets, Blue soft baits
Exterior	Mice	High	Blue soft baits

NO TREATMENT in those areas

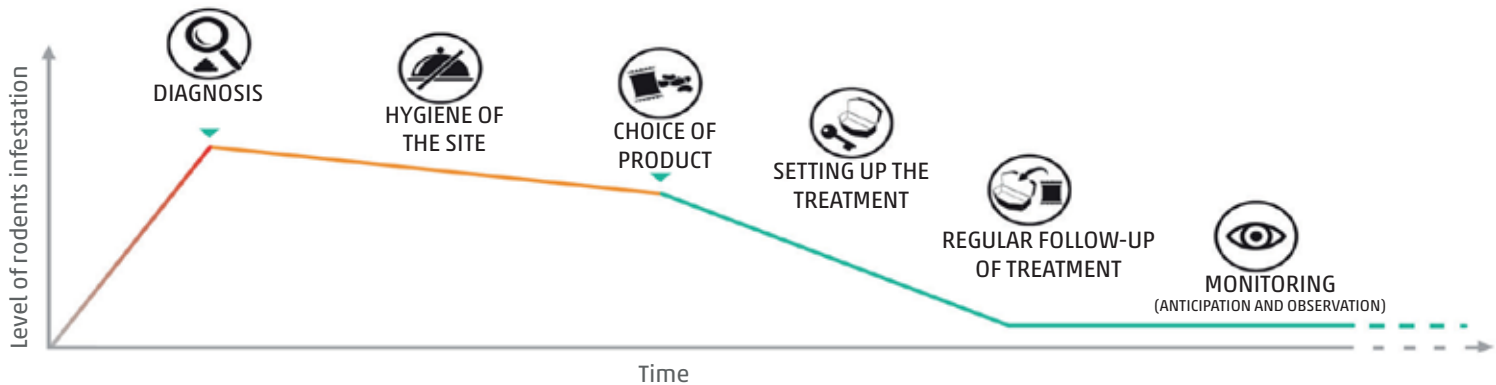
#### MANURE

Exterior	Norway rat	High	Blue blocks, Green pellets
----------	------------	------	----------------------------

In case of ongoing heavy infestations we recommend to seek help from professional pest control operators

# KEY STEPS

GOOD PRACTICES + GOOD PRODUCT  
= SUCCESSFUL TREATMENT



## DIAGNOSIS

GETTING FAMILIAR WITH THE SITE

- **SITUATIONAL ANALYSIS OF INDOORS AND OUTDOORS AREAS**
- **LOCATE**
  - The most infested areas.
  - Food sources, water points.
  - Rodents' entry points.
- **IDENTIFY RODENT SPECIES by investigating signs of activity**
- **ASSESS THE EXTENT OF THE INFESTATION based upon density of the signs of rodent activity**



## HYGIENE ON THE SITE

PROPHYLACTIC MEASURES

- **REMOVE OR LOCK UP** all food sources.
- **ELIMINATE COVER AREAS** trim vegetation 1m from the building, prune the trees, remove pile of debris.
- **REMOVE ANYTHING THAT MAY BE USED AS SHELTER**
- **UNDERTAKE ANY WORKS NECESSARY TO KEEP** rodents out and prevent them from settling in



## PRODUCT CHOICE

- **ACCORDING TO RODENT SPECIES**
- **ACCORDING TO SITE**
- **ACCORDING TO INFESTATION LEVEL**
- **ACCORDING TO REGULATIONS ON SITE**



## SETTING UP THE TREATMENT

- **POSITION THE BAITS** near places showing rodent activity; we recommend **creating a "layer of protection" by placing rodents of baits** around buildings to prevent rodents entry.  
In humid areas, position the bait stations so that water doesn't get in to maximise bait longevity.
- **USE ENOUGH BAITS** Always read labels and inquire about site restrictions beforehand.
- **PLACE THE BAITS** in bait stations for safer control.



## REGULAR FOLLOW UP OF TREATMENT

- **INSPECT THE BAIT STATIONS** a few days after the first application, then once a week until the baits are eaten.
- **REFILL THE BAIT STATIONS** with enough bait in line with conditions of use until baits are no longer eaten. It is essential to ensure that bait is available at all time (the right dose of the right product at the right place) to cover the entire population.
- **REMOVE ANY BAITS** that may have been pulled out from the station by rodents, discard of any empty sachets and dead rodents to limit risk of secondary poisoning.



## ANTICIPATION AND OBSERVATION

**TO CONTROL INFESTATION OR RE-INFESTATION EARLY**