

# PROTECTION OF POULTRY FARMS

against rodent infestation



Your local reseller

Guide developed by the Technical Service and Development of  
De Sangosse Australia

Copyright 2020 DE SANGOSSE AUSTRALIA. Any partial or complete  
reproduction, imitation is forbidden without a prior approval of  
De Sangosse Australia.

# THE PESTS

Rats and mice have specific characteristics. By identifying the correct species of rodents present on site, you can select the right rodent control products and the best strategy to insure maximum efficacy of the treatment.

## ROOF RAT (Black rat / Ship rat)



### KEY FEATURES

**Body** : 15-20cm • **Tail** : longer than the head + body length (different from Norway rat) • **Ears** round and big

### INFESTATION INDICATORS

**Droppings** shaped like « water drops » cylindrical, 1cm long, very dry, black • **Footprints** and tail prints on dust • **Damages** : electrical wires, stored food and gnaw marks.



### BEHAVIOUR

Nest **high up** inside buildings, in roof tops, attics, grain storage areas • Does not burrow but build **nests**. **Highly wary and neophobic** • **Food diet**: Fruits, nuts, grain, meat  
Requires small amount of water

## NORWAY RAT (Brown rat / Sewer rat)



### KEY FEATURES

**Body** : 20-25cm • **Tail** : shorter than the head + body length (different from Roof rat) • **Ears** small

### INFESTATION INDICATORS

**Droppings** shaped like « olive pits », 1.5cm long. Smell of **urine** • Bare tracks in vegetation and burrows • **Damages** : crop damages, electrical wires, gnaw marks, eats and contaminates foodstuffs.



### BEHAVIOUR

Lives in humid and dark areas, **water banks**, sewers. **Burrows in embankments and fields** • **Food diet**: Cereals & grain, meat  
Requires constant supply of water. • Hoards foodstuffs

## MICE



### KEY FEATURES

**Body** : 6-10cm • **Tail** : longer than the head + body length  
**Ears** : big, pointy

### INFESTATION INDICATORS

- **Droppings** shaped like « rice grain », 0.5cm long. Scattered, brown in colour.
- **Urine** very distinctive smell
- **Damages** : crop damages, electrical wires, insulation, eat and contaminates foodstuffs.



### BEHAVIOUR

Lives in farms, houses and grain storage. In crops, with conducive conditions population can explode rapidly. **Builds nest and lives in colony**. Can also dig burrows (especially in crops) • **Curious, not wary**  
**Food diet**: Omnivorous, chews on all materials and removes husks from grains.

# RECOMMENDED PRODUCTS

**ROOF RAT**  
(Black Rat)

**NORWAY RAT**  
(Brown rat)

**MICE**

**PRODUCTS KEY BENEFITS**

## IN AND AROUND BUILDINGS



### GENERATION BLUE® SOFT BAIT

5kg - Product code: GENBLUE-SB-5500  
1.5kg - Product code: GENBLUE-SB-1500  
480g - Product code: GENBLUE-SB-480

*Difethialone - 25mg/kg*



Using food grade ingredients and vegetable oil. Sachet allows aroma to escape  
**Highest attractiveness and palatability**  
**QUICK KNOCK DOWN with small dose**  
No genetic resistance globally



### GENERATION BLUE® BLOCKS

7.5kg - Product code: GENBLUE-BL-7500  
1.2kg - Product code: GENBLUE-BL-1200

*Difethialone - 25mg/kg*



**Extended protection**  
**Strong attractiveness**  
**Ideal for damp environment**  
Best efficacy on Roof rats  
Central hole for easy securing.



### BROMAKIL GRAIN

15kg - Product code: 200282  
4kg - Product code: 200295  
2kg - Product code: 200283  
500g - Product code: 200287

*Bromadiolone - 50mg/kg*



Highly palatable cracked grain  
Does not germinate  
**Ideal in environment with high food competition like grain storage facilities sheds, farm, etc.**



### BROMAKIL PELLET

3.4kg - Product code: 200296  
10kg - Product code: 200288

*Bromadiolone - 50mg/kg*



Single feed pelletised bait. Can be used in burrows.  
**Great efficacy on Norway rats**  
**Ideal under floor spaces and in dry areas**

## IN AND AROUND BUILDINGS - DRY CONDITIONS



### BROMAKIL SUPER RAT DRINK

500ml - Product code: 200284  
5L - Product code: 200286

*Bromadiolone - 50mg/kg*



**Concentrated liquid bait**  
Very effective during summer months  
**Ideal in dry environment and where rats rejected other baits**

## SECURING BAITS



### GENERATION TUNNEL STATION

Product code: GEN-TUN-ST



### GENERATION RAT STATION

Product code: GEN-RAT-ST



### GENERATION® MOUSE STATION

Product code: GEN-MOU-ST



**Quick opening and closing system**

**PROTECTION**  
Safe for users and non-target species

**PROTECTION**  
Bait is effectively protected from harsh weather conditions, dust and temperature variations...

**STURDINESS**  
Stations are durable, cleanable and re-usable

Always read label before use.

DE SAN GOSSE AUSTRALIA Pty Ltd  
17/45 Huntley St, Alexandria, NSW2015  
Tel: 02 9519 6360 - Email: infoau@desangosse.com

**DE SANGOSSE**



# Recommendations for heavy infestations

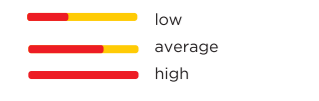
## The right product in the right place !

Bait station locations are for guidance

(always read the label and product information before use)

### LEGEND

#### RODENTS ACTIVITY INDICATOR



#### OUR PRODUCTS

- GENERATION BLUE SOFT BAITS
- GENERATION BLUE BLOCKS
- BROMAKIL GRAINS
- BROMAKIL PELLETS
- BROMAKIL DRINK

#### RATES

- Mice**
- 3 to 5 sachets (10g) per bait station
  - 25 to 50g of grain per bait station
- Rats**
- 10 to 20 sachets (10g) per bait station
  - 100 to 200g of grain per bait station
  - 10-15 blocks (15g) per bait station

#### BAIT STATIONS

- TAMPER RESISTANT BAIT STATIONS
- In case of high infestations
- Mouse bait stations
  - Every 1 to 1.5 m
- Rat bait stations
  - Every 4 to 5 m

ELECTRICAL CABINET

#### INSIDE BREEDING AREA

Around	Roof Rat		
	Norway Rat		
	Mice		
Indoor	Roof Rat		
	Norway Rat		
	Mice		

#### OUTSIDE AREA

Around	Norway Rat		
--------	------------	--	--

#### HUMID AREA

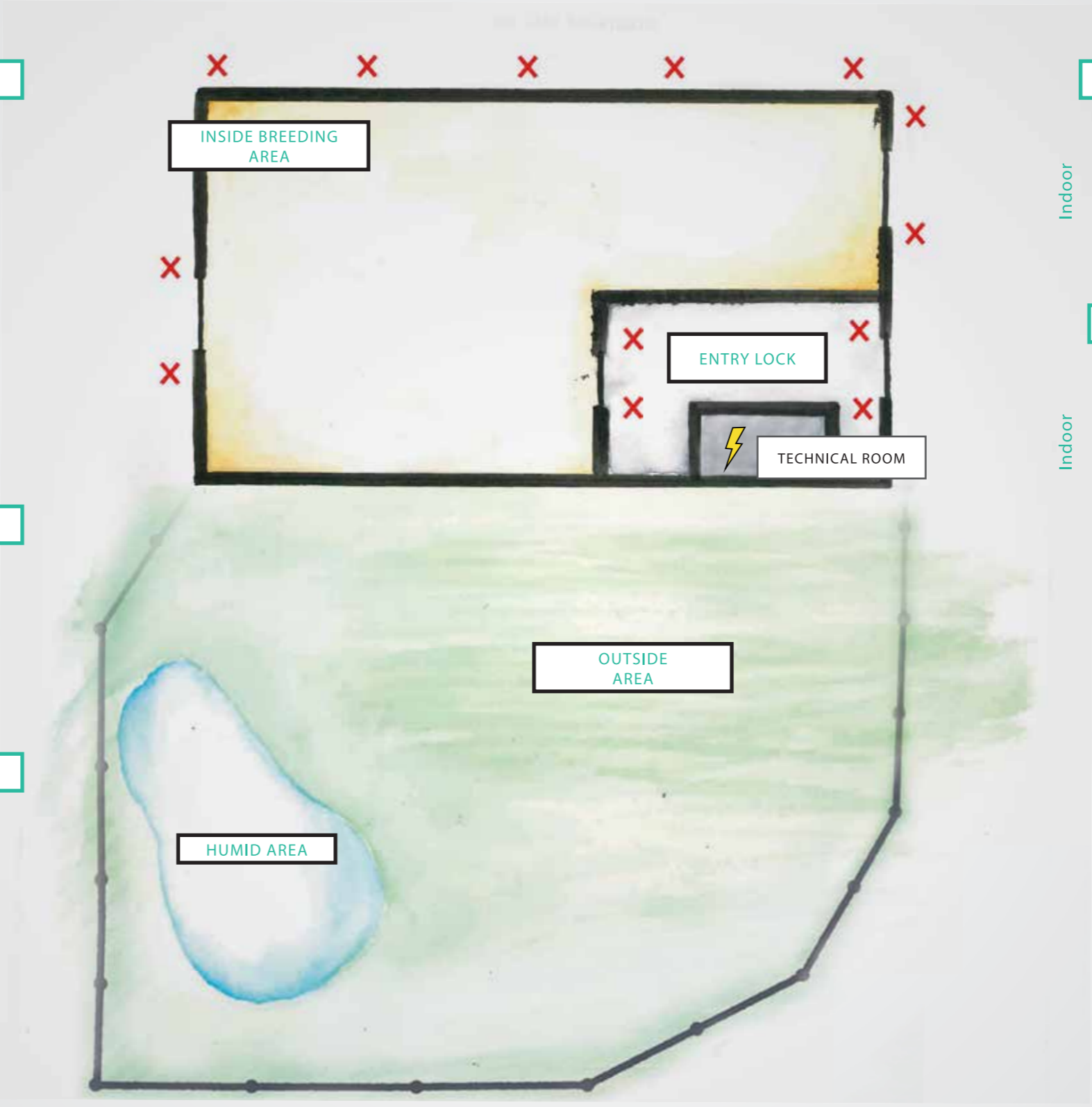
Around	Norway Rat		
--------	------------	--	--

#### ENTRY LOCK

Indoor	Roof Rat		
	Norway Rat		
	Mice		

#### TECHNICAL ROOM

Indoor	Roof Rat		
	Norway Rat		
	Mice		



Apply soft bait sachets in closed and secured electrical cabinet.

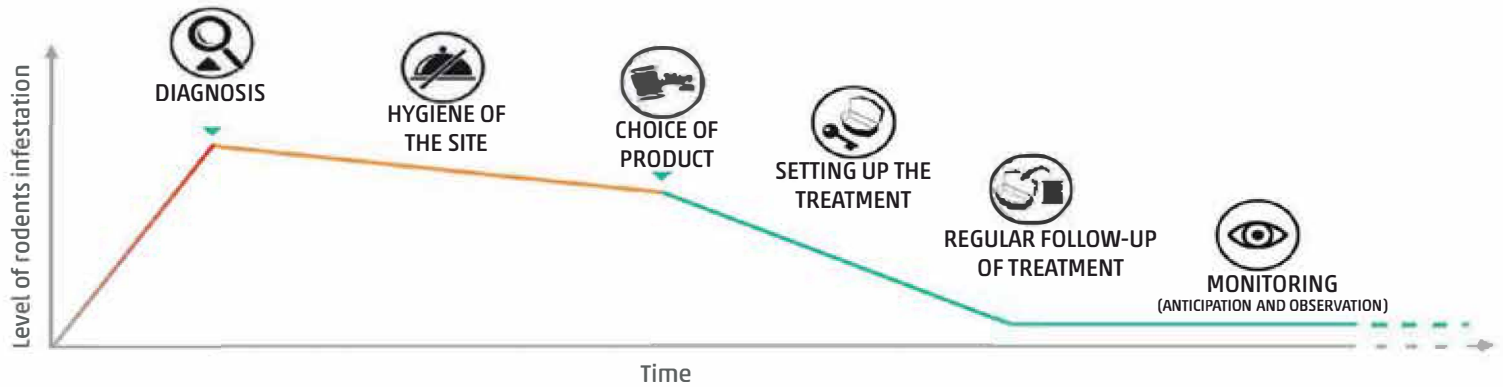
EXPERT ADVICE

- For Roof Rats, we recommend an elevated treatment by fixing the baits as close as possible to signs of presence.
- For Rats, fix the baits in bait station using pins for better efficiency.

In case of ongoing heavy infestations we recommend to seek help from professional pest control operators

# KEY STEPS TO EFFICIENT AND SAFE CONTROL

GOOD PRACTICES + GOOD PRODUCT  
= SUCCESSFUL TREATMENT



## DIAGNOSIS

GETTING FAMILIAR WITH THE SITE

- **SITUATIONAL ANALYSIS OF INDOORS AND OUTDOORS AREAS**
- **LOCATE**
  - The most infested areas.
  - Food sources, water points.
  - Rodents' entry points.
- **IDENTIFY RODENT SPECIES** by investigating signs of activity
- **ASSESS THE EXTENT OF THE INFESTATION** based upon density of the signs of rodent activity



## HYGIENE ON THE SITE

PROPHYLACTIC MEASURES

- **REMOVE OR LOCK UP** all food sources.
- **ELIMINATE COVER AREAS** trim vegetation 1m from the building, prune the trees, remove pile of debris.
- **REMOVE ANYTHING THAT MAY BE USED AS SHELTER**
- **UNDERTAKE ANY WORKS NECESSARY TO KEEP** rodents out and prevent them from settling in



## PRODUCT CHOICE

- **ACCORDING TO RODENT SPECIES**
- **ACCORDING TO SITE**
- **ACCORDING TO INFESTATION LEVEL**
- **ACCORDING TO REGULATIONS ON SITE**



## SETTING UP THE TREATMENT

- **POSITION THE BAIT** near places showing rodent activity; we recommend **creating a "layer of protection"** by placing rodents of baits around buildings to prevent rodents entry. In humid areas, position the bait stations so that water doesn't get in to maximise bait longevity.
- **USE ENOUGH BAIT** Always read labels and inquire about site restrictions beforehand.
- **PLACE THE BAIT** in bait stations for safer control.



## REGULAR FOLLOW UP OF TREATMENT

- **INSPECT THE BAIT STATIONS** a few days after the first application, then once a week until the baits are eaten.
- **REFILL THE BAIT STATIONS** with enough bait in line with conditions of use until baits are no longer eaten. It is essential to ensure that bait is available at all time (the right dose of the right product at the right place) to cover the entire population.
- **REMOVE ANY BAIT** that may have been pulled out from the station by rodents, discard of any empty sachets and dead rodents to limit risk of secondary poisoning.



## ANTICIPATION AND OBSERVATION

**TO CONTROL INFESTATION OR RE-INFESTATION EARLY**